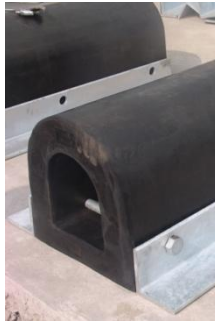
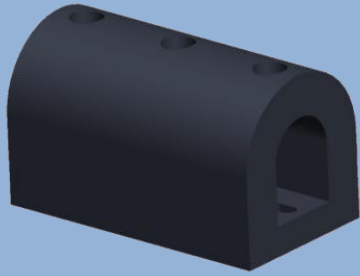


# **JIER**

## **JD D TYPE FENDERS**





## JD D Type Fenders

D Fenders can be pre-curved, chamfered and drilled to aid installation at a relatively low cost and can also be cut to the length required. They provide an excellent barrier against damage from all sizes and shapes of vessels. They are ideal for smaller quays and wharves serving fishing boats, tugs, barges and other work craft. D Fenders are also commonly used on pontoons and on inland waterways for lock protection. D Fenders are also called Extrusion Fenders. Extrusion is a manufacturing process involving pushing unvulcanized rubber through a special die to form a constant cross-section profile.

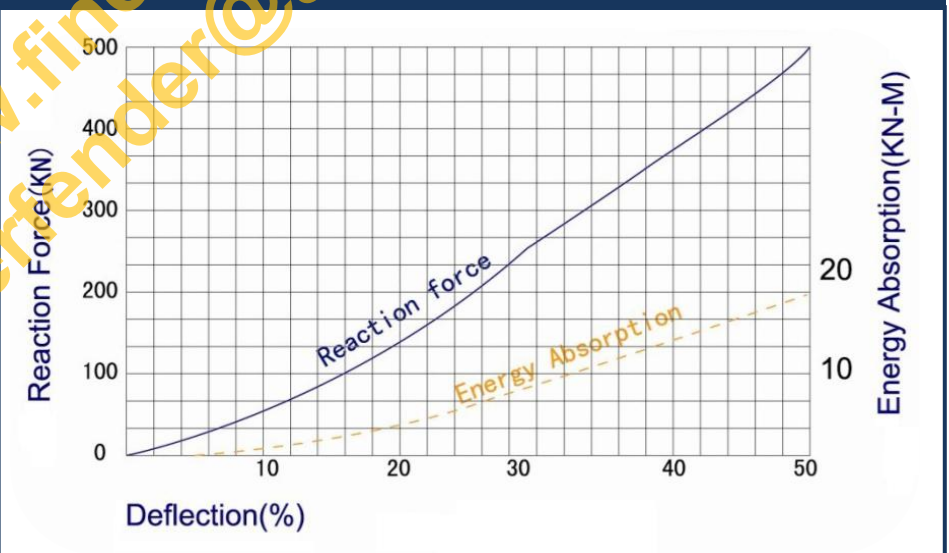
## Core Attributes

- ◆ Ideal for smaller quays and wharves
- ◆ Easy to install with a flat bar down the bore
- ◆ Can be supplied in long lengths and be cut to length, angle cut at the ends

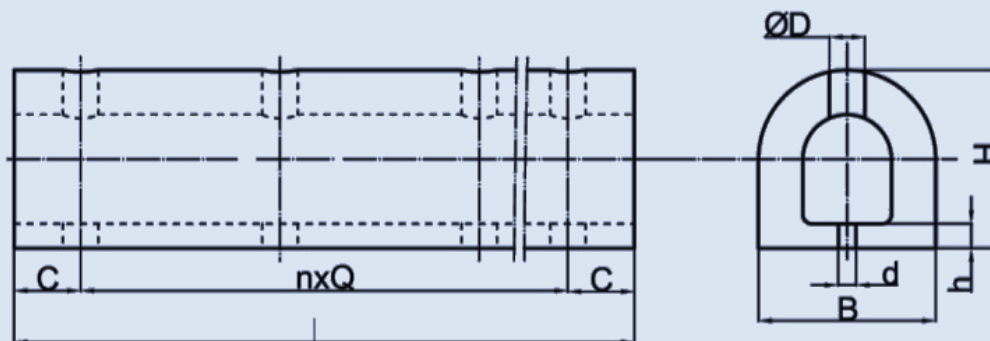
### JD D Type Fender Performance Table

Model (mm)	Rated deflection 50%	
	Reaction force (KJ)	Energy absorption (KN · M)
JD150x150x1000L	115	3.2
JD200x200x1000L	211	8.6
JD250x250x1000L	252	9.2
JD300x300x1000L	300	12
JD300x360x1000L	330	14.28
JD400x400x1000L	390	20
JD500x500x1000L	460	32

### JD D Type Fender Performance Curve







## JD D Type Fender Dimensions Table

Size	H	B	L	Hole	Q	C	h	D	d
JD150x150x1000L	150	150	1000	3	350	150	25	40	24
JD200x200x1000L	200	200	1000	3	350	150	35	55	30
JD200x200x3000L	200	200	3000	8	400	100	35	55	30
JD250x250x1000L	250	250	1000	3	350	150	35	60	30
JD250x250x3000L	250	250	3000	8	400	100	35	60	30
JD300x300x1000L	300	300	1000	3	350	150	40	65	32
JD300x300x3000L	300	300	3000	8	400	100	40	65	32
JD300x360x1000L	300	360	1000	3	350	150	40	65	32
JD300x360x3000L	300	360	3000	8	400	100	40	65	40
JD400x400x1000L	400	400	1000	3	350	150	55	80	32
JD400x400x3000L	400	400	3000	8	400	100	55	80	40
JD500x500x1000L	500	500	1000	3	350	150	90	97	45
JD500x500x3000L	500	500	3000	8	400	100	90	97	45

### Main Applications

D Fenders suits a wide variety of general purpose applications.

- ◆ Smaller jetties and wharves
- ◆ Workboats and service craft
- ◆ Mooring pontoon protection
- ◆ Inland waterways
- ◆ General purpose applications

