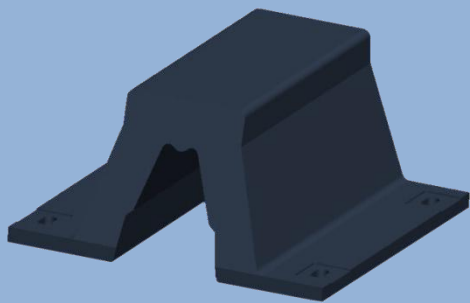


JIER

JDA ARCH FENDERS





JDA Arch Fenders

JIER manufactures two types Arch Fenders, JDA-A and JDA-B. The JDA-A fender has a rubber contact face ideal for all general purpose applications. The higher friction of the rubber surface can be used to good effect to dampen the movements between vessel and wharf in sea swells and similar conditions. Where friction must be low or when a facing panel is required, the JDA-B fender is ideal with its encapsulated steel head plate with integral bolting points. The JDA-B has two fixing arrangements to suit either UHMW-PE low-friction face pads or for attaching to a steel fender panel or pile.

Core Attributes

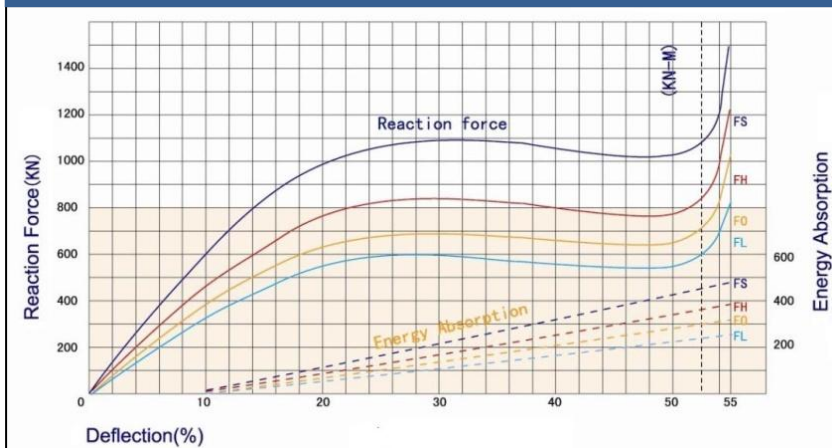
- ◆ Rugged single piece moulding for long service life
- ◆ Strong bolting arrangement is easy and quick to install
- ◆ Choice of JDA-A and JDA-B designs
- ◆ Excellent shear resistance means shear chains rarely needed
- ◆ Large range of sizes, lengths and Energy Indices

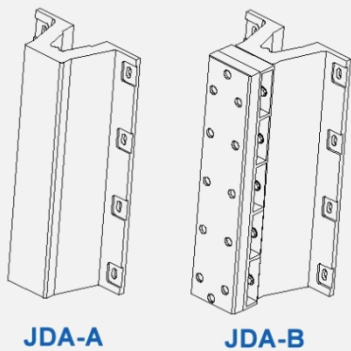
JDA Arch Fender Performance Table

Model		FS		FH		FO		FL	
		52.5%	55%	52.5%	55%	52.5%	55%	52.5%	55%
JDA150	E	7.1	8.4	6.1	7.1	4.1	5.1	3.1	4.1
	R	135	182	147	157	87.7	117	58	79.6
JDA200	E	11.2	14.3	11.2	12.2	8.2	9.2	5.1	6.1
	R	176	240	156	208	114	156	78.5	104
JDA250	E	29	41.2	22.8	24	18.8	19.8	16.6	17.7
	R	281	391	216	300	179	249	154	213
JDA300	E	41.8	44.8	31.6	33.7	25.5	27.4	22.4	24.5
	R	330	460	254	353	290	300	181	251
JDA400	E	74.4	79.4	57.1	61.2	46.9	50	40.8	43.9
	R	441	612	339	469	281	361	241	334
JDA500	E	115	123	89.5	94.9	73.4	78.5	69.4	67.3
	R	551	765	423	588	351	487	301	418
JDA600	E	166	179	129	138	106	113	90.7	97
	R	660	917	508	706	420	590	361	502
JDA800	E	296	317	228	254	189	202	162	173
	R	881	1224	677	940	561	779	481	669
JDA1000	E	463	496	356	381	295	317	253	271
	R	1101	1529	846	1176	703	975	602	835

Note: **FS:** Super High Reaction Force. **FH:** High Reaction Force. **FO:** Standard Reaction Force. **FL:** Low Reaction Force. **E:** Energy Absorption. **R:** Reaction Force

JDA Arch Fender Performance Curve





JDA-A

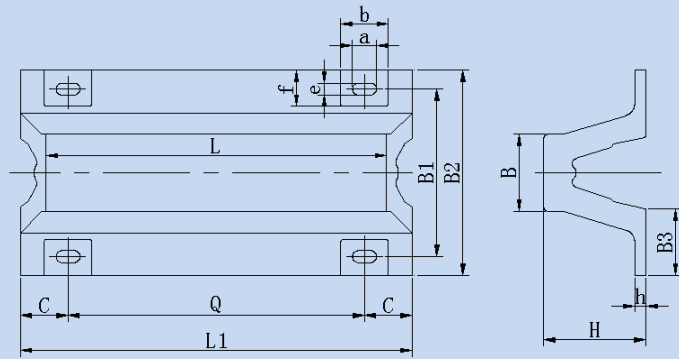
JDA-B



**BUREAU
VERITAS**

TYPE APPROVED

JIER Marine Fenders factory has approved by BUREAU VERITAS to PIANC 2002 – Guidelines for the design of Fenders systems Appendix A. Procedure to determine and report the performance of marine fenders and ASTM D – Standard Test Methods for Vulcanized Rubber and Thermoplastic Elastomers-Tension.



JDA Arch Fender Dimensions Table

Size	L	L1	H	h	B	B3	B2	B1	f	e	C	b	a	Q
JDA150	1000	1075	150	22.5	98	96	300	240	55	25	110	95	50	855
	1500	1575	150	22.5	98	96	300	240	55	25	113	95	50	675
	2000	2075	150	22.5	98	96	300	240	55	25	215	95	50	620
	2500	2575	150	22.5	98	96	300	240	55	25	220	95	50	785
	3000	3075	150	22.5	98	96	300	240	55	25	215	95	50	715
	3500	3575	150	22.5	98	96	300	240	55	25	220	95	50	671
JDA200	1000	1100	200	30	145	128	400	320	75	29	120	105	58	860
	1500	1600	200	30	145	128	400	320	75	29	120	105	58	680
	2000	2100	200	30	145	128	400	320	75	29	120	105	58	620
	2500	2600	200	30	145	128	400	320	75	29	123	105	58	785
	3000	3100	200	30	145	128	400	320	75	29	120	105	58	715
	3500	3600	200	30	145	128	400	320	75	29	120	105	58	672
JDA250	1000	1125	250	33	164	160	500	410	90	32	130	125	64	865
	1500	1625	250	33	164	160	500	410	90	32	133	125	64	680
	2000	2125	250	33	164	160	500	410	90	32	133	125	64	620
	2500	2625	250	33	164	160	500	410	90	32	128	125	64	790
	3000	3125	250	33	164	160	500	410	90	32	133	125	64	715
	3500	3625	250	33	164	160	500	410	90	32	130	125	64	673
JDA300	1000	1150	300	33	225	195	600	490	105	35	140	140	70	870
	1500	1650	300	33	225	195	600	490	105	35	140	140	70	685
	2000	2150	300	33	225	195	600	490	105	35	138	140	70	625
	2500	2650	300	33	225	195	600	490	105	35	140	140	70	790
	3000	3150	300	33	225	195	600	490	105	35	145	140	70	715
	3500	3650	300	33	225	195	600	490	105	35	140	140	70	674
JDA400	1000	1200	400	40	300	260	800	670	120	41	150	165	82	900
	1500	1700	400	40	300	260	800	670	120	41	150	165	82	700
	2000	2200	400	40	300	260	800	670	120	41	148	165	82	635
	2500	2700	400	40	300	260	800	670	120	41	150	165	82	800
	3000	3200	400	40	300	260	800	670	120	41	150	165	82	725
	3500	3700	400	40	300	260	800	670	120	41	150	165	82	680
JDA500	1000	1250	500	45	375	325	1000	840	140	47	160	180	94	930
	1500	1750	500	45	375	325	1000	840	140	47	160	180	94	715
	2000	2250	500	45	375	325	1000	840	140	47	158	180	94	645
	2500	2750	500	45	375	325	1000	840	140	47	160	180	94	810
	3000	3250	500	45	375	325	1000	840	140	47	165	180	94	730
	3500	3750	500	45	375	325	1000	840	140	47	160	180	94	686
JDA600	1000	1300	600	54	450	390	1200	1010	160	50	170	195	100	960
	1500	1800	600	54	450	390	1200	1010	160	50	170	195	100	730
	2000	2300	600	54	450	390	1200	1010	160	50	168	195	100	655
	2500	2800	600	54	450	390	1200	1010	160	50	170	195	100	820
	3000	3300	600	54	450	390	1200	1010	160	50	170	195	100	740
	3500	3800	600	54	450	390	1200	1010	160	50	170	195	100	692
JDA800	1000	1400	800	72	600	520	1600	1340	260	68	180	270	136	1040
	1500	1900	800	72	600	520	1600	1340	260	68	180	270	136	770
	2000	2400	800	72	600	520	1600	1340	260	68	180	270	136	680
	2500	2900	800	72	600	520	1600	1340	260	68	183	270	136	845
	3000	3400	800	72	600	520	1600	1340	260	68	180	270	136	760
	3500	3900	800	72	600	520	1600	1340	260	68	180	270	136	760
JDA1000	1000	1500	1000	90	750	650	2000	1680	300	68	200	290	136	1100
	1500	2000	1000	90	750	650	2000	1680	300	68	200	290	136	800
	2000	2500	1000	90	750	650	2000	1680	300	68	200	290	136	700