

## Hybrid strobe and lamp | Plug-and-play with subsea cameras

A high-efficiency, TTL synchronized **subsea LED** that operates as both a lamp and a strobe. It can be integrated into subsea ROV, observatory, drop, tow, and battery-deployed camera systems.

Available at two depth ratings, the Aquorea can simultaneously operate as a lamp and strobe. When taking a photo, the LED's activation time is tightly synchronized with the camera sensor exposure time to ensure the video stream is uninterrupted while collecting photos. SubC LEDs and lasers are plug-and-play when coupled with the **Rayfin Camera**.



Specifications		6000m	500m
<b>Light Specs</b>	Lamp Output	Up to 15000 Lumens	
	Colour	5000K	
	Beam Angle	80° (circular)	
	Strobe Output	32000+ Lumens	
	Reaction Speed	Approx. 190 Microseconds	
<b>Electrical</b>	Efficiency	180 Lumen/Watt @ 15°C water	
	Protection	Short Circuit, UV-OV-RV, ESD, OT	
	Thermal Protection	Auto Dim/Shutoff	
	Control	Serial RS-485	
	Strobe	TTL 5V (active high)	
	Power	18-32 Vdc / 48-120 Watts	
<b>Mechanical</b>	Min./Max. Temperature	-10°C - +20°C in water	
	Materials	Sapphire, Grade 5 Titanium	Sapphire, Anodized Aluminum
	Weight	0.9kg in water, 1.5kg in air	0.5kg in water, 1.2kg in air
	Depth Rating	6000m	500m

Specifications subject to change without notice. © 2010 SubC Control Ltd. All rights reserved. Rev. July 2021



Lamp & strobe functionality

**180lm/W**

180 lumens per watt



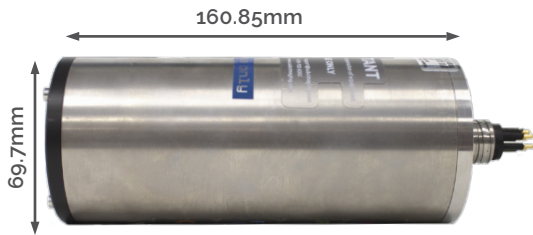
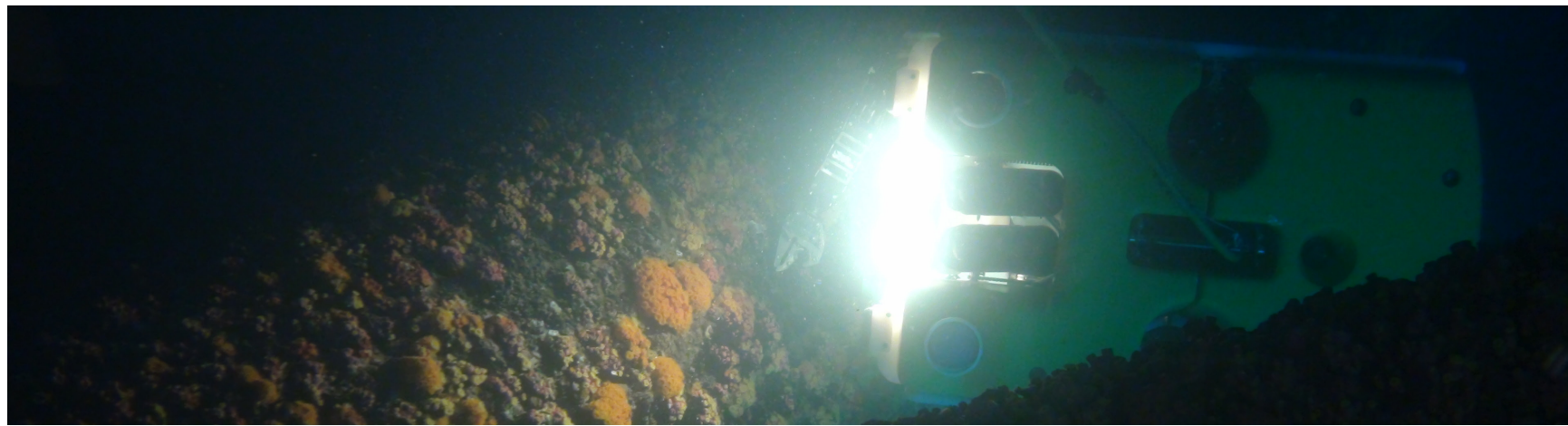
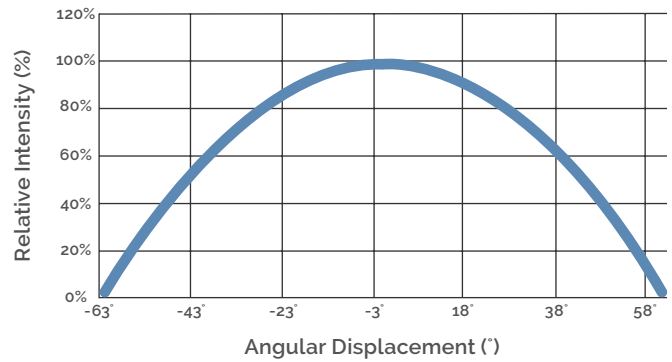
80° Beam Angle

## Colour Options

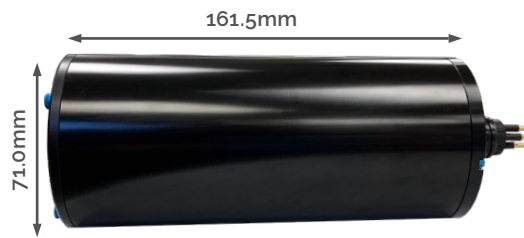
The Aquorea LED\* is available in various specific deepsea purposes like far-red (734 nm) for natural species behavior studies, deep-blue (457 nm) for subsea fluorescence and leak detection, and other wavelengths to meet your needs.

*\*Colour options only available in 6000m*

Aquorea LED Radiation Pattern in Water



*Titanium LED (6000m)*



*Aluminum LED (500m)*

Pin #	MCBH5M
1	GND
2	PWR
3	Strobe enable
4	RS-485 B(-)
5	RS-485 A(+)